

Alaska Department of Fish and Game

Habitat Section
Southeast Region



114-25-10350 Tributary 1

ADDITION

Water body name:

Survey date: 5/21/2024

Quad: Juneau A-4 and B-4

Species & Lifestage:

Upper Reach Latitude: 58.247727 **Longitude:** -135.182676

Survey crew: CD, DK, FC, NJ

Lower Reach Latitude: 58.245866 **Longitude:** -135.180796

Findings: We surveyed this uncataloged stream from the road using a backpack electrofisher, baited minnow traps, and GPS and captured juvenile coho salmon. The stream below the culvert is narrow with a moderate gradient and large cobble substrate present. Perched culvert at the road is likely hindering fish passage and sediment transport. Due to time constraints, no survey upstream was conducted (Table 1; Figures 1–3).

Recommendations: Add this stream up to waypoint 88 into the anadromous waters catalog for rearing coho salmon and Dolly Varden (Figure 4).

Nomination: Pending

Table 1.–114-25-10350 Tributary 1 survey data.

Waypoint	Latitude	Longitude	Notes	Stream Width ft	Stream Substrate	Habitat Features	Gradient %	Sample Effort	Sample Results
88	58.247732	-135.182697	Culvert perched about 2 ft. Two CO caught with EF, one escaped. Two DV caught in MT. Stream approx 4-8 ft wide and lots of cobble and gravels.		Small Gravel		4-6	EF	2 CO 2 DV
89	58.247107	-135.182897	Gradient levels out a bit. One SC caught.		Small Gravel		2-4	EF	1 SC
90	58.247894	-135.182908	Culvert inlet. Stream parallels road then 90 degree turn into culvert.				2-4	EF	1 DV
107	58.247829	-135.182920	Minnow trap soaked in plunge pool just downstream of outlet of 2' wide CMP, perched 3'.	2-4	Large Gravel		4-6	MT	



Figure 1.—Juvenile coho salmon captured at waypoint 88.



Figure 2.—Channel at waypoint 88.



Figure 3.—Perched culvert at waypoint 107.

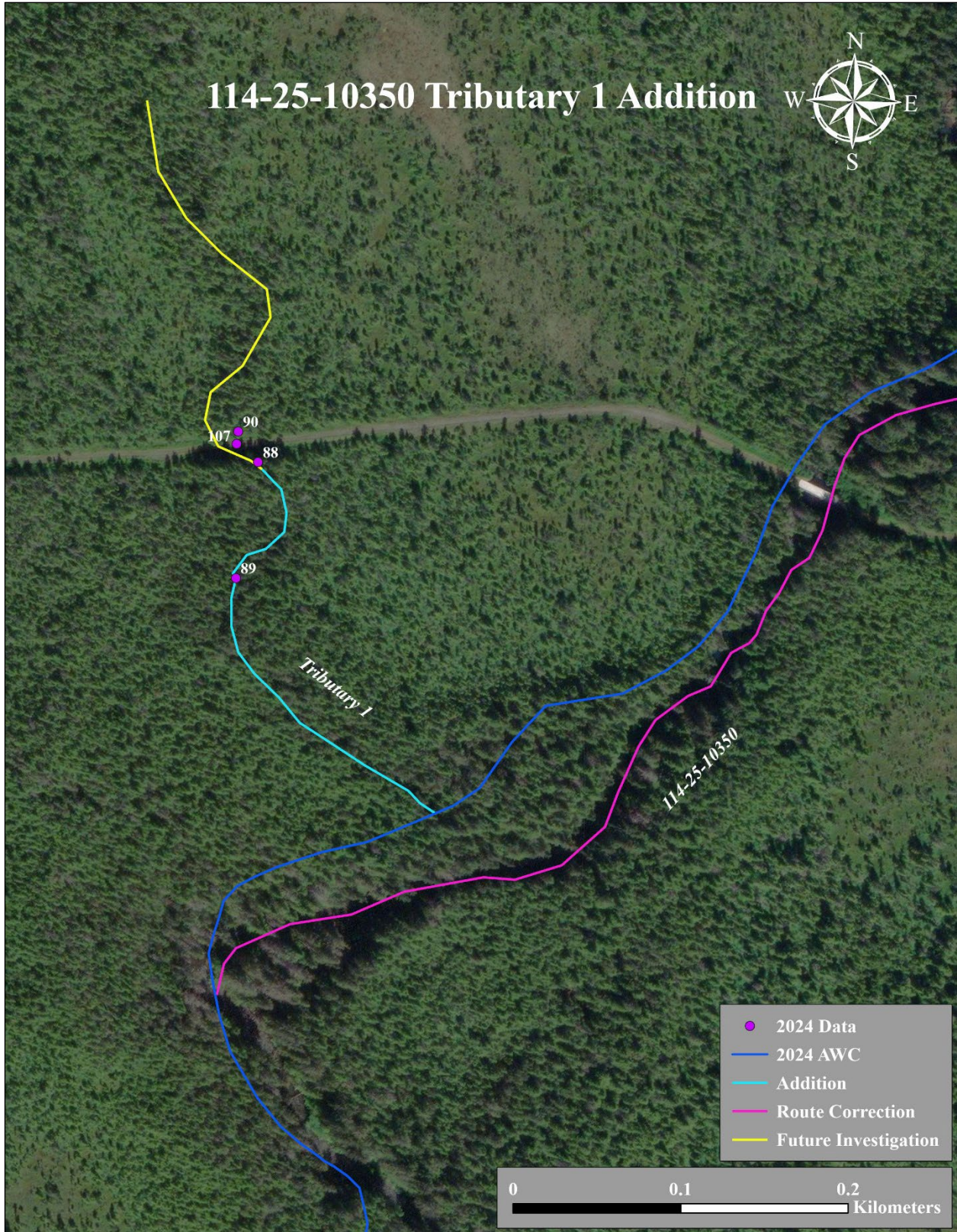


Figure 4.—Stream No. 114-25-10350 Tributary 1 addition map.